



Apartment Amenities

- 1, 2 & 3 Bedroom Homes
- Full Size Washer & Dryer Connections
- Granite Counter Tops through out
- Beautiful Covered Porches
- Steel Entry Doors
- Faux Wood Flooring
- Beautiful Energy Efficient Appliances
 - Frost Free Refrigerators
 - Range with Self Cleaning Ovens
 - Microwaves
- Mini-blinds
- Ceiling Fans
- Water & Trash Paid
- Handicapped & Visually Impaired*
- Patio with Extra Storage

*In select units

Community Features

- Controlled Access Gate
- Beautiful Landscaping
- Fully Appointed Clubhouse
- Playground
- Sports Court
- Fitness Center
- Business Center
- Planned Activities

320 FM 316 North
Eustace, TX 75124
Fax: (903) 287-9156

Professionally Managed by



StoneLeaf
At Eustace
APARTMENT COMMUNITY

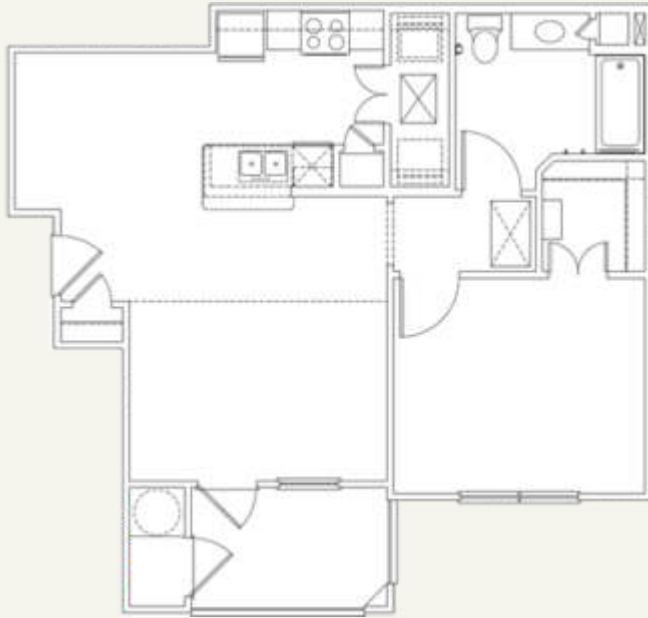


(903) 287-9959

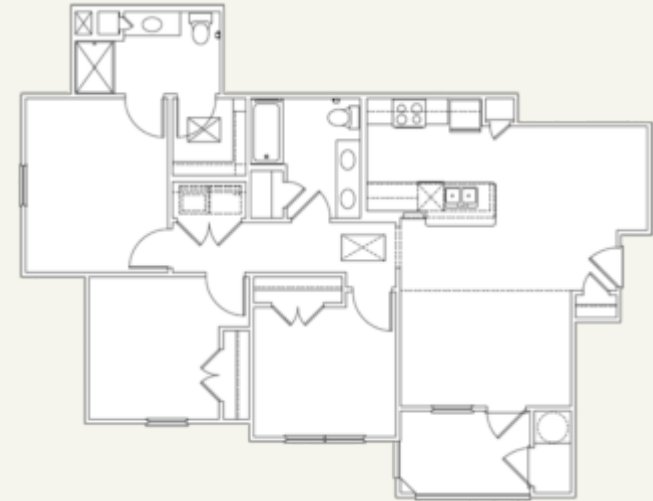
320 FM 316 North
Eustace, TX 75124
Fax: (903) 287-9156

stoneleafateustace.com
manager@stoneleafateustace.com

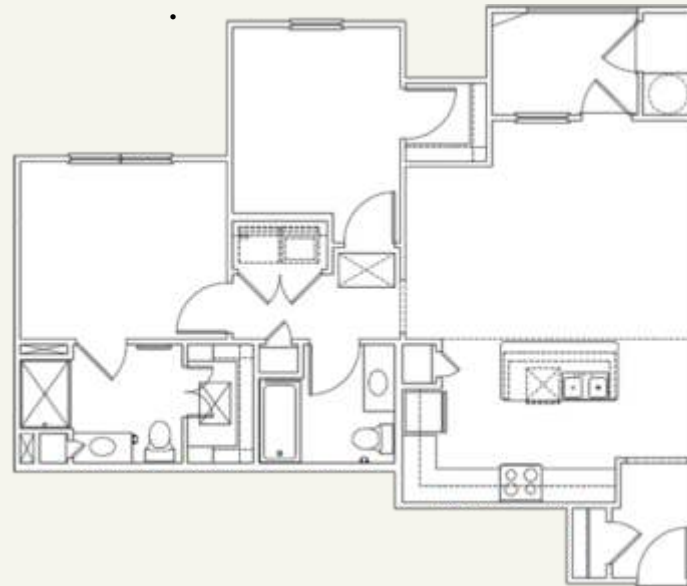
A1 - One Bedroom / One Bath*



Welcome To Stoneleaf at Eustace
Stoneleaf At Eustace – It's a wonderful day at Stoneleaf at Eustace! Come join the fun! Our community offers controlled access gate, playground, 24 hour emergency maintenance, a large clubhouse facility with activity center, Fitness center, business center, a gazebo with fireplace and sitting area and much more! Come experience a community that cares about where you live and offers Quality living and superior customer service. Call or visit TODAY and allow our professional staff to find the perfect apartment home for you at Stoneleaf at Eustace.



B1 - Two Bedroom / Two Bath*



C1- Three Bedroom / Two Bath*

Granite Counter Tops



(903) 287-9959

320 FM 316 North
Eustace, TX 75124
Fax: (903) 287-9156

*Square footage is approximate